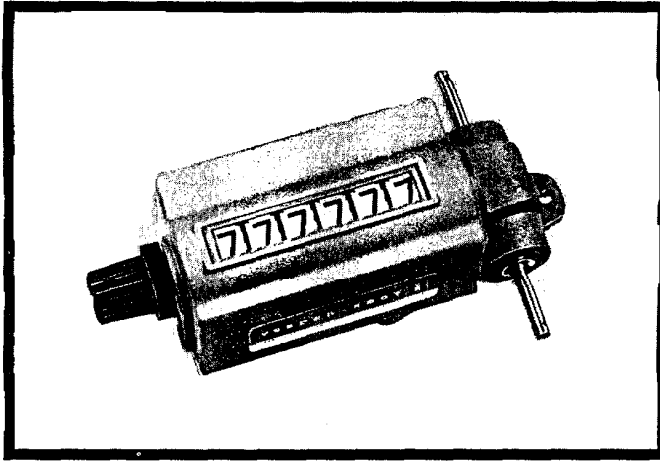




SERIES 1953, 1961

Visicounter* -- LM



Series 1953 Visicounter* -- LM

Features

Precise linear measuring for all types of moving materials.

High visibility figures increase reading accuracy.

Standard ratios measure yards, eighths of yards, feet or meters, plus many other ratios.

Double shafts give extra stability to the measuring wheels that ride in direct contact with moving material.

Universal or fork coupling equally adaptable to either right or left end of counter shaft -- instead of measuring wheels.

Applications

Linear measuring in textile, wire, cable and paper industries. Position indicating on machine tools.

Series 1953: Geared Drive, adds one count for specified number of drive shaft revolutions in specified rotation. Subtracts for opposite rotation if reset knob is not obstructed. (Lock-and-key reset model, nonstock, will not subtract past zero on right-hand wheel.) Right-hand drive only, with double shaft extension at right angles to counting register. See Accessories.

Series 1961: Geared Drive: Same as 1953 except non-reset. Nonstock make item.

Form Numbers

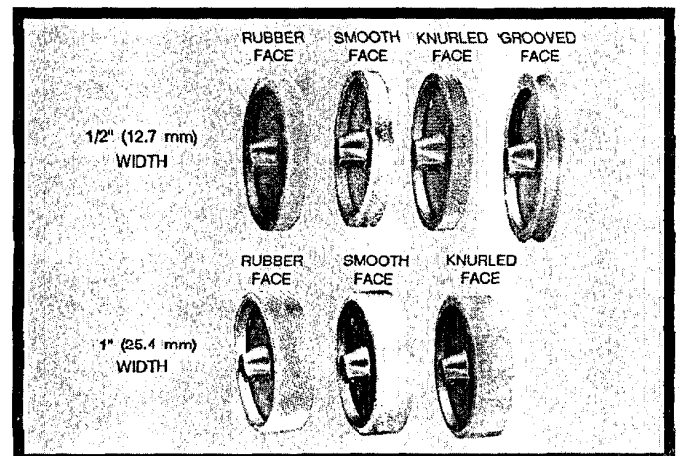
Knob reset, 6 figures

	1	2
1:1 ratio	195316-051	195326-045
3:1 ratio	195316-052	195326-046
0.375:1 ratio	195316-053	

Accessories

Measuring Wheel Form Numbers

	1 Foot (304.8 mm)		1/3 Meter (13.12")
Bore	0.251" (6.38 mm) ID		0.251" (6.38 mm) ID
Face Width	1/2" (12.7 mm)	1" (25.4 mm)	1/2" (12.7 mm)
Rubber	15537-070	15537-530	407186-009
Smooth	15537-095	15537-525	
Knurled	15537-510	15537-535	
Grooved	15537-187		



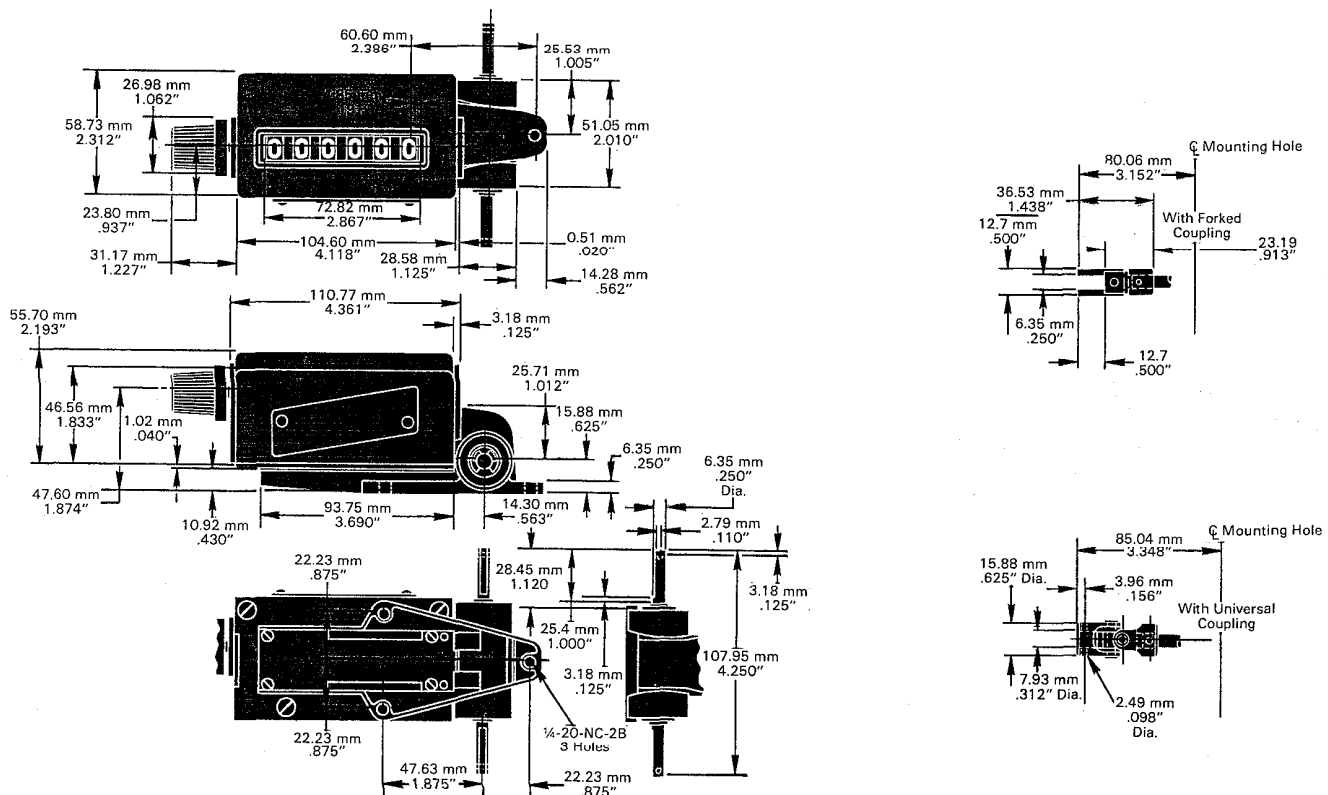
Measuring Wheels

SERIES 1953 -- Visicounter* -- LM

Specifications

Count Speed	1500 rpm or 5000 cpm, whichever is limiting, when adding.
Torque	Maximum static 1.5 oz-in.(1.06 N-cm) with 3:1 ratio.
Number of Figures	6.
Size of Figures	0.345" (8.8 mm) high by 0.250" (6.35 mm) wide.
Color of Figures	White on black standard.
Reset	Manual knob or lock-and-key.
Mounting	Base.
Construction	Case and worm base: Zamak. Base plate: steel. Wheel, pinions: acetal resin. Right angle drive shafts: stainless steel. Bearings: porous bronze, oil impregnated. Worm gear: brass. Worm: stainless steel.
Net Weight	3 lb. (1.36 kg).
Options	Fork or universal coupling. Ball bearings with worm base for speeds to 2500 rpm with static torque as low as 0.1 oz-in. (0.07 N-cm). Wheel colors, character configurations. Nonreset, variety of gear ratios.

Dimensions



VEEDER-ROOT
Digital Products



125 Powder Forest Drive, Post Office Box 2003, Simsbury, CT 06070-2003 TEL: (203) 651-2700, FAX: (203) 651-2750

AUSTRALIA: Cheltenham, Victoria • BRAZIL: Sao Paulo • CANADA: Toronto/Montreal/Vancouver
FRANCE: Rungis • SCOTLAND: Dundee • WEST GERMANY: Neuhausen/Filder