

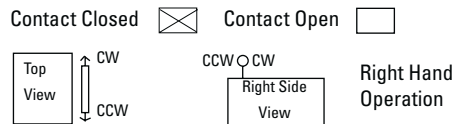
### Type HLD - Double Acting Hatchway - Limit Switch

Poles	Contacts Sequence <sup>3</sup> CCW CW	Standard Enclosure Catalog No.	Dust-tight Enclosure Catalog No.	Ship. Weight
1		HLD-1	HLD-5	11 lbs.
2		HLD-2	HLD-6	
2		HLD-3	HLD-7	
2	as specified	HLD-4	HLD-8	
Poles	Contacts Sequence CCW CW	Watertight Enclosure Catalog No.	Ship. Weight	12 lbs.
1		HLD-9		
2		HLD-10		
2		HLD-11		
2	as specified	HLD-12		

Cams are included under JC80

### Contact Sequence

Cam No.	As Supplied CCW CW	Converted To: CCW CW
A102-277623		
A102-277624		
A102-277625		



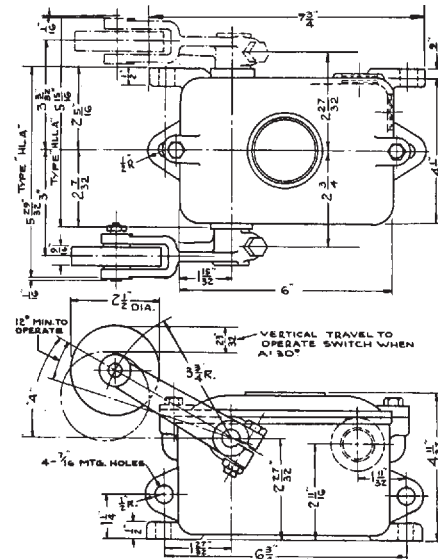
### Limit Switch Electrical Ratings

25 Amp - 600V AC Maximum Heavy Pilot Duty 600V AC A600, 250V DC Maximum N300.			
Current - Amperes			
Volts	Carry	Break	Inrush/ Make
110-120V AC	25	6.0	6.0
220-240V AC	25	3.0	3.0
440-480V AC	25	1.5	1.5
550-600V AC	25	1.2	1.2
115-125V DC	10	2.2	2.2
230-250V DC	10	1.1	1.1

### Ordering Information

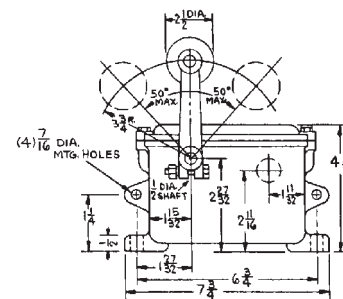
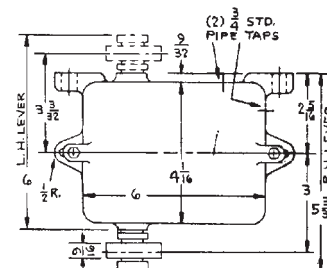
- Use complete catalog number when ordering.
- Modifications on page G2. If modifications are required, state in full detail on the order.

HLA-1, 2, 3 & 30, HLLA-1, 2, 3 & 30,  
Standard and Dust-tight Enclosures  
12<sup>0</sup> min. to operate std. 1 & 2 pole switches.  
Switches with overlapping contacts require 22<sup>0</sup> min.



HLD-1, 2, 3 & 4 in Standard Enclosure  
HLD-5, 6, 7 & 8 in Dust-tight Enclosure

Spare Parts	JC 80
Movable Contact	A101-028965
Torsen Spring	A101-062988
1 Pole Base	A102-041256A
2 Pole Base	A102-041255A
Std. Arm & Roller	A102-302350A
JC32	
5" Lever with Steel Roller	A102-248096A
5" Lever with 7" Dia. Composition Roller	A102-075993A



### Notes:

- Includes operating lever and standard steel roller.
- All contacts are NC when shipped from the factory. To change to NO, loosen cam and rotate 180°.
- Any 1 or 2 pole switches may be converted from right to left hand and vice versa, using a screwdriver.