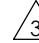


1. RUNOUT MEASURED WITH UNIT MOUNTED.
2. ROTOR AND STATOR TO BE AXIALLY ALIGNED WITH WITHIN .025.
3. MAX. ERROR FROM E-Z OF ± 5 MINUTES WHEN ROTOR IS MOUNTED ON A SHAFT WHERE RUNOUT IS .003 F.I.R. AND MOUNTING CONCENTRICITY OF STATOR IS .004 F.I.R.
4. MATERIAL: HOUSING - ALUMINUM
ROTOR SLEEVE - PLATED 12L14
5. LEADS TO BE TWISTED IN PAIRS COVERED WITH A SINGLE TIN PLATED TUBULAR BRAID AND HEAT SHRINKABLE RNF-150 TUBING.
6. UNIT ACCURACY AND T.R. VALUE TO BE MARKED IN AREA SHOWN NEAR LEAD EXIT.

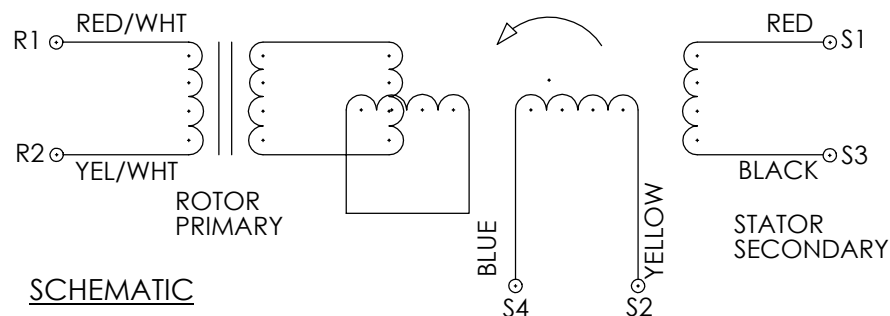
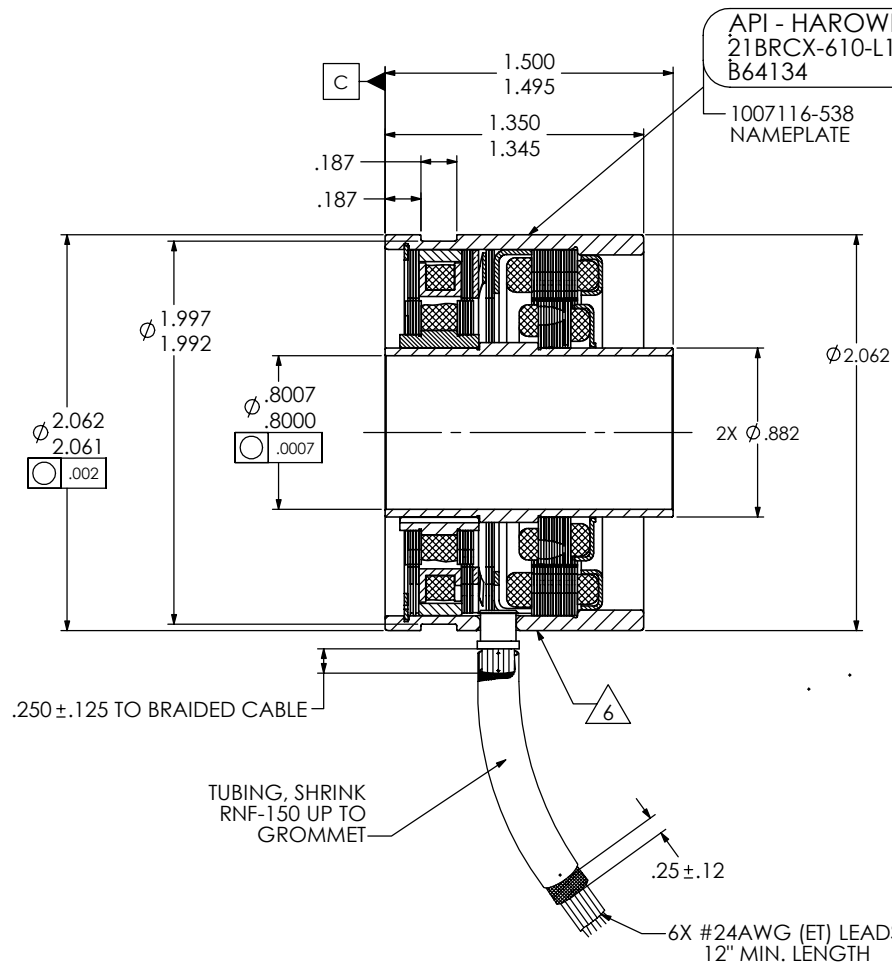
MECHANICAL DATA			ELECTRICAL DATA		7500 HZ
Temperature Range	°C	-55 to +155	Input Voltage	Volts RMS	4.25
Rotor Moment Of Inertia	Oz-In-Sec²	0.0028	Input Current	Max. MA	55
Weight	Oz.	9.5	Input Power	Nom. Watts	.11
Max. Continuous Speed	KRPM	20	Impedance ZRO	Ohms	55+J 76
			Impedance ZRS	Ohms	46+J 67
			Impedance ZSO	Ohms	60+J138
			Impedance ZSS	Ohms	52+J121
			Transformation Ratio	±10%	.470
			Output Voltage	±10% Volts	2.0
			DC Rotor Resistance	±15% Ohms	18
			DC Stator Resistance	±15% Ohms	21
			Max. Error From E-Z	Minutes	±2
			Phase Shift (Open Circuit)	Nom.	5°±3°
			Null Voltage	Max. MV	10
			Hipot to Case	60Hz VRMS	500
			Hipot Between Phases	60Hz VRMS	250

MADE IN ST. KITTS, W.I.
 S/N: D/C: .
 ACC: .



E, INC.
 12/2

MADE IN ST. KITTS, W.I.
 S/N: D/C: .
 ACC: .



SCHEMATIC

PHASING EQUATION
FOR CCW ROTATION OF ROTOR FACING
TRANSFORMER MOUNTING FLANGE END.

$$\begin{aligned} E(S1-S3) &= KE(R1-R2) \cos \theta \\ E(S2-S4) &= -KE(R1-R2) \sin \theta \end{aligned}$$

THIS DRAWING HAS BEEN
CREATED BY CAD/CAM. DO NOT
MANUALLY REVISE OR UPDATE.

Tolerancing Complies With ANSI/ASME Y14.5M-1994

[illegible]

API Harowe
WEST CHESTER, PA. 19382

PROPRIETARY RIGHTS OF HAROWE SERVO CONTROLS ARE INCLUDED IN THE INFORMATION DISCLOSED HEREIN. DO NOT DUPLICATE OR DISCLOSE TO THIRD PARTIES WITHOUT WRITTEN PERMISSION OF HAROWE SERVO.

**OUTLINE & PERFORMANCE
SPECIFICATIONS**
**RESOLVER BRUSHLESS FRAMELESS
3 SPEED**

SCALE 2:1	DWG. NO.	21BRCX-610-L12/2 SHEET 1 OF 2	A
--------------	-------------	----------------------------------	---