

7441 Series Electric Preset Counter

When panel area is limited, and functional simplicity is a key concern, the 7441 Series may be the best predetermining counter for the job. It counts down from a user entered preset value. Upon reaching zero, an output switch is actuated. Manual or remote reset restores the switch and preset value to their original condition.

Setting a preset value into the 7441 Series is direct and easy, yet secured from unintentional change. Just press the reset button to its special latched position, then use the five digit-buttons to set the desired number on the display. If left latched, the reset button will automatically return to its normal position when the first count signal is received.



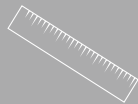
- Reliable operation at counting speeds to 1500/minute
- Underwriters Laboratories Recognized
- 5 figure count display and preset capability
- Models for AC and DC operation
- Compact size – 2" wide (50.8mm), 1" high (25.4mm)
- Rugged, high impact plastic and stainless steel case
- Unique preset interlock prevents accidental change
- Form C (SPDT) output contacts rated at 1 amp.
- Models available with electric remote-reset
- Convenient plug-in connector



TIME



COUNT



MEASURE

8:43

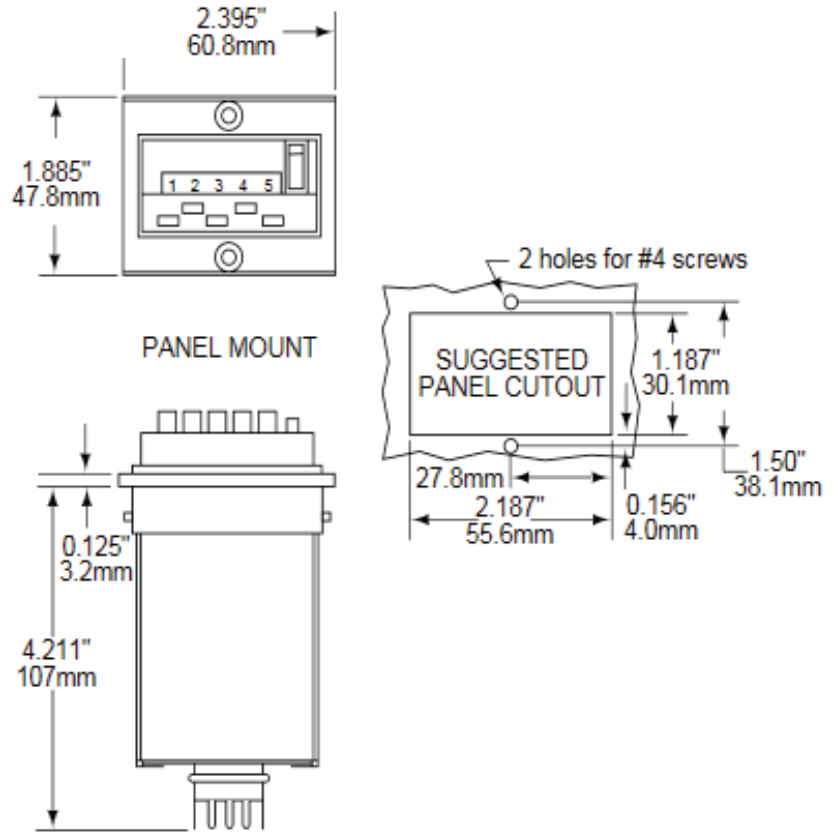
DISPLAY

7441 Series Electric Preset Counter

SPECIFICATIONS

COUNT SPEED	1500 cpm on DC, 1200 cpm on AC
OPERATING TEMPERATURE RANGE	+32° F to +120° F (0 to +49° C)
MAXIMUM ON TIME	With a 50% duty cycle, maximum permissible ON time is 5 minutes
COUNT PULSE TIMING	20 milliseconds minimum on- or off-time for DC operation, 25 milliseconds minimum on-time for AC operation
ELECTRIC RESET TIMING	250 milliseconds minimum; 30 seconds maximum; allow 500 milliseconds after removal of reset pulse before applying count pulse
SUPPLY VOLTAGE	Standard voltages are 115 VAC, 50/60 Hz; 24 VDC; allowable voltage variation is ±10% or 10 volts, whichever is less
POWER CONSUMPTION	6 watts count coil, 12 watts reset coil
OUTPUT ACTUATION	The internal SPDT switch actuates on the power-off half of the predetermining count cycle; the switch will remain in its position, and the count will stay at zero until the counter is reset
NUMBER OF FIGURES	5
SIZE OF FIGURES	0.160" high x 0.075" wide (4.1 x 1.9mm)
COLOR OF FIGURES	White on black
RESET	Manual pushbutton; Electric reset
PRESET	Manual pushbutton for each digit; reset button must be fully depressed and latched to permit setting
CONNECTIONS	Plug-in connectors
WEIGHT	5 oz. (142g)

DIMENSIONS



ORDERING INFORMATION

Standard Models

- 0744195-211 115 VAC, 1500Ω Count Coil Resistance
- 0744195-221 115 VAC, 1500Ω Count Coil Resistance, 716Ω Electric Reset Coil Resistance w/ Electric Reset
- 0744195-226 115 VAC, 100Ω Count Coil Resistance, 77Ω Electric Reset Coil Resistance w/ Electric Reset

Special variations may be available. Please consult factory.