

INSTRUCTION MANUAL

FOR

**150KC SERIES
COOLING EXTENSIONS**

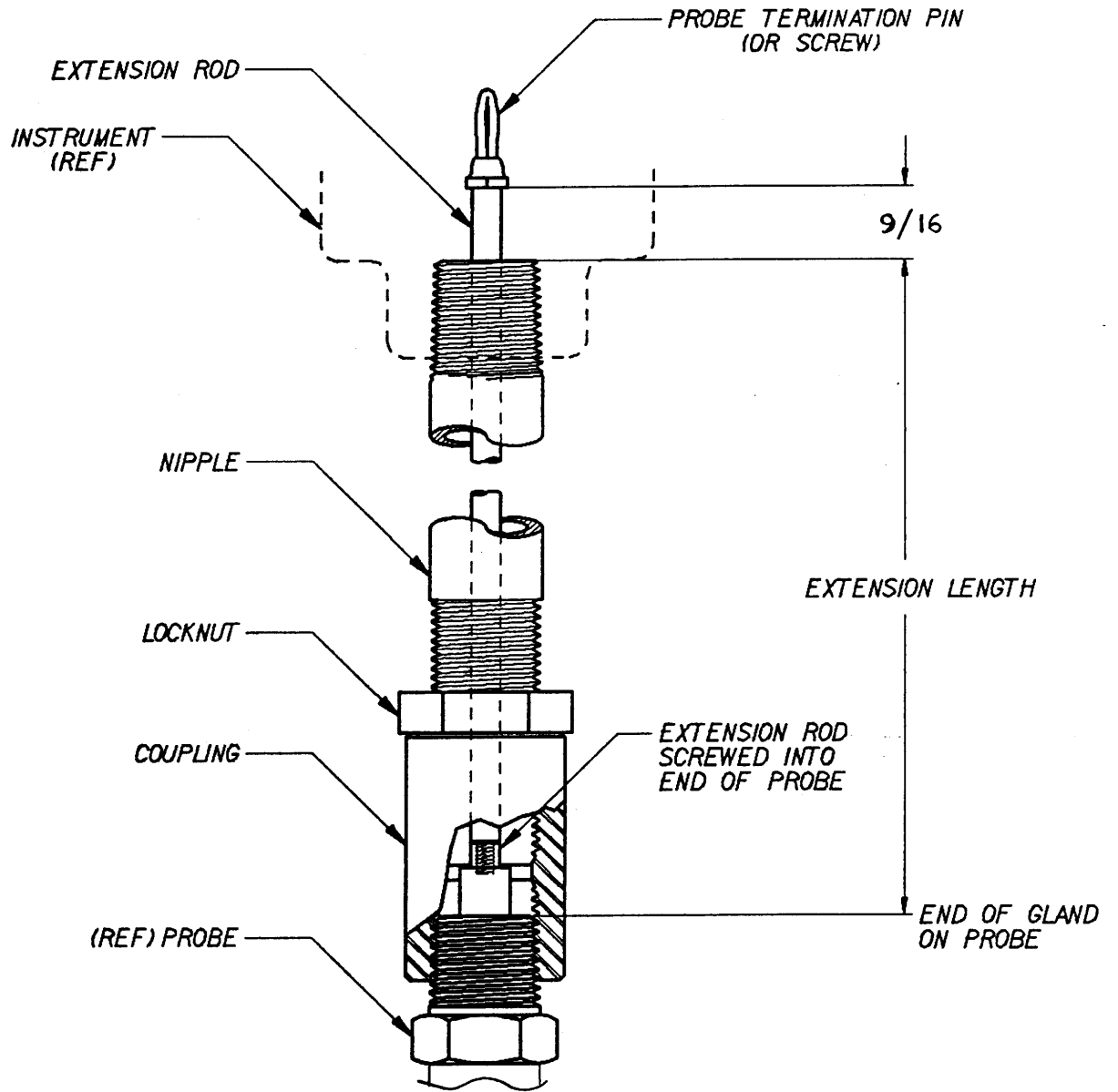
Robertshaw

Industrial Products Division
1602 Mustang Drive
Maryville, Tennessee 37801
Phone: (865) 981-3100 Fax: (865) 981-3168

INSTRUCTION MANUAL NUMBER

909SC724A

February 15, 1991



Assembly Instructions

There are two recommended methods of assembly. Method number 1 is to be used for those probe extensions where the extension rod fits loose in the probe extension. Method number 2 may be used for those probe extensions where the extension rod fits tightly in the probe extension.

Method Number 1

1. Remove probe termination pin (or screw), if in probe.
2. Remove extension rod from extension nipple and screw rod into probe until tight.
3. Slide extension nipple and coupling over rod and screw coupling on probe until tight.
4. Loosen locknut and adjust nipple until rod protrudes 9/16 from end of nipple as shown. Tighten locknut.
5. Install probe termination pin (or screw) into end of rod extension. If, in this condition, probe termination does not engage circuit board receptacle, loosen locknut and adjust length of extension until it does. Tighten locknut.

Method Number 2

1. Remove probe termination pin (or screw), if in probe.
2. The extension rod should be approximately flush with the end of the nipple, the end opposite the coupling.
3. Place the extension assembly over the end of the probe so that the coupling and rod extension will screw on to the probe. First the extension rod should engage the probe. Turn until tight allowing the coupling to engage the probe. If not engaged, push down on the nipple until the coupling engages with the probe. Turn coupling until tight on the probe.
4. Loosen locknut and adjust nipple until rod protrudes 9/16 from end of nipple as shown. Take care that the rod does not loosen from the probe. Tighten locknut.
5. Install probe termination pin (or screw) into end of rod extension. If, in this condition, probe termination does not engage circuit board receptacle, loosen locknut and adjust length of extension until it does. Tighten locknut.



Robertshaw

Industrial Products Division

U.S.A and Canada

Robertshaw Industrial Products Division

1602 Mustang Drive

Maryville, Tennessee 37801

Telephone: (865) 981-3100 Fax: (865) 981-3168

<http://www.robertshaw.thomasregister.com>

<http://www.robertshawindustrial.com>

Exports

Invensys Appliance Controls

2809 Emerywood Parkway

P.O. Box 26544

Richmond, Virginia 23261-6544

Telephone: (804) 756-6500 Fax: (804) 756-6561

(2/91)

Printed in U.S.A.