



G SERIES SANITARY CLAMP HIGH TEMPERATURE (SIP) (PRECISION TURBINE METERS)

The G Series High Precision Meter is the most accurate of all the FLOMEC® Turbine Meters:

FEATURES / BENEFITS

- Meter includes a traditional design
- Available in a variety of sizes
- Low Profile option available

APPLICATIONS

- Fuel
- Batching
- Food & Beverage
- Petro Chemicals
- Pharmaceuticals
- Thin Viscosity Fluids Under 100 Centipoise
- Process Control
- Chemical Feed Lines
- Irrigation
- High Water Volume Mixing
- High Precision / High Pressure

APPROVALS



PRODUCT CONFIGURATION

PRODUCT IDENTIFIER **1**

G = G Series Precision Turbine Meter

FITTING TYPE **2**

SC = Sanitary Clamp

SHAFT / SLEEVE BEARING / THRUST BEARING **3**

PS = Stainless Steel / PEEK / PEEK

TURBINE SIZE & FLOWRATE **4**

- 100 = 1 in. Turbine, 1-1/2" Clamp
- 100L = 1 in. Turbine, 1-1/2" Clamp, Low Profile Adapter
- 150 = 1-1/2 in. Turbine, 1-1/2" Clamp
- 150L = 1-1/2 in. Turbine, 1-1/2" Clamp, Low Profile Adapter
- 200 = 2 in. Turbine, 2" Clamp
- 200L = 2 in. Turbine, 2" Clamp, Low Profile Adapter

SENSOR CHOICE **5**

- 1** = Low Drag Standard Sensor with 12 inch Lead Wires
- 2** = Standard Sensor with 12 inch Lead Wires
- X** = No Sensor - Turbine Body Only

ELECTRONIC CHOICE (LOCAL) **6**

Turbine Mounted

- 5 = GG510 - Standard Display
- 6 = GX510 - 4-20 mA Transmitter with Display
- 7 = GA510 - 4-20 mA Transmitter
- 8 = SC510 - Scaled Pulse Output
- X = No Electronics - Turbine Body Only

1 2 3 4 5 6
 --->>>> **G + SC + PS + -150 + 2 + -6 = SAMPLE**

GSCPS & "L" Option Meters carry a



Sanitary Rating.

Flowmeters for milk and milk products, Number 28-04.

This meter meets the strict 3-A Sanitary Standards using the new "Third Party Verification" (TPV) program. Our methods of design, construction and traceability of components have been reviewed and approved.

The internals of this meter are machined or polished to meet 3-A self-draining and cleaning requirements (Ra 32). The GSCPS Meter meets Clean in Place (CIP), Steam in Place (SIP) and Clean Out of Place (COP) requirements.

SPECIFICATIONS

Design Type:	Turbine		
Fitting Type:	Sanitary Clamp		
Housing Material:	316 Stainless Steel		
Meter Sizes Available:			
For GSCPS	1" 1-1/2" 2"		
Meter ID:			
	1" --> 1-1/2" Fitting		
	1-1/2" --> 1-1/2" Fitting		
	2" --> 2" Fitting		
Flow Range:	1" (100)	6.7 - 67 GPM	(25.2 - 252 LPM)
	1-1/2"(150)	17.7 - 177 GPM	(67 - 670 LPM)
	2" (200)	33 - 330 GPM	(125 - 1250 LPM)
Accuracy (Linearity):	± 0.5%		
Repeatability:	± 0.1%		
Pressure Rating:	Limited by fitting size, clamp size and temperature.		
Operating Temperature Range:			
For GSCPS:	-100° F to +225° F (-74° C to +107° C)		
For SIP (up to 1 hour):	+285° F (+140° C)		
Typical K-Factor:	1" (100)	896 PPG / 237 PPL	
	1-1/2"(150)	340 PPG / 90 PPL	
	2" (200)	181 PPG / 48 PPL	

ACCESSORIES / ELECTRONICS

Part No.	Description
80001100	X-Proof Enclosure
80001101	Weather proof enclosure - Zinc
80001102	X-Proof enclosure with Terminal Strip
80001105	Weather proof Enclosure - SS
GA500	4-20 mA Transmitter - Remote
GA510	4-20 mA Transmitter - Local
GG500-M	Display with pulse out - Remote
GG510-M	Display with pulse out - Local
GX500-M	Display with 4-20 mA Transmitter - Remote
GX510-M	Display with 4-20 mA Transmitter - Local
SC500	Scaled Pulse Unit - Remote
SC510	Scaled Pulse Unit - Local
E112	Explosion-proof Display - Local
F Series (F116/F118/F126/F130)	Remote Panel Mount Electronics
N410	Deluxe Batch Controller

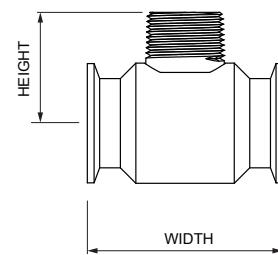
Wetted Materials:	Housing:	316 Stainless Steel
	Bushings & Bearings:	PEEK
	Shaft:	316 Stainless Steel
	Rotor:	CD4MCu Stainless Steel
	Rotor Supports:	316 Stainless Steel
	Retaining Rings:	300 Series Stainless Steel
Recommended Strainer Size:		
	1 inch	40 mesh
	1-1/2 inch	18 mesh
	2 inch	14 mesh
Frequency Output:	1" (100)	100 - 1000 Hz
	1-1/2"(150)	100 - 1000 Hz
	2" (200)	100 - 1000 Hz
Calibration Report:	Comes standard with G Series meters.	
	N.I.S.T. - Certification available.	

DIMENSIONS

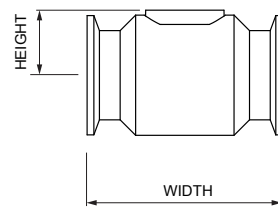
Meter Size	Length " (mm)	Height " (mm)
1/2"	2.75 (70)	1.63 (41)
3/4"	3.25 (82)	1.84 (47)
1"	3.56 (90)	1.84 (47)
1-1/2"	4.59 (116)	2.11 (53)
2"	6.06 (154)	2.39 (61)

Meter Size	Length " (mm)	Height " (mm)
1/2"	2.75 (70)	0.79 (20)
3/4"	3.25 (82)	1.03 (26)
1"	3.56 (90)	1.03 (26)
1-1/2"	4.59 (116)	1.21 (31)
2"	6.06 (154)	1.45 (37)

GSCPS STANDARD



GSCPS LOW PROFILE



Service & Warranty: For technical assistance, warranty replacement or repair contact your **FLOMEC®** or **GPI®** distributor: In North or South America: **888-996-3837 / GPI.net**
Outside North or South America: **+61 2 9540 4433 / flomec.com.au**